



## CERTIFICATE OF ANALYSIS

20 Martin Ross Avenue, North York, ON, M3J 2K8, CANADA  
Tel: (416) 665-9696, Fax: (416) 665-4439  
Email: orders.trc@lgcgroup.com Website: www.trc-canada.com

### 1. Identification

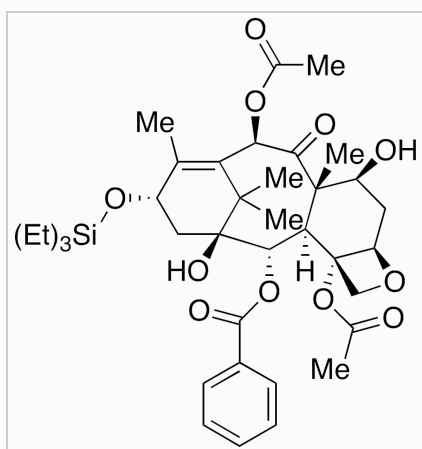
**Catalogue Number:** T777930

**CAS Number:** 208406-86-4

**Product:** 13-O-(Triethylsilyl) Baccatin III

**Synonym:** (2aR,4S,4aS,6R,9S,11S,12S,12aR,12bS)-6,12b-Bis(acetyloxy)-12-(benzyloxy)-1,2a,3,4,4a,6,9,10,11,12,12a,12b-dodecahydro-4,11-dihydroxy-4a,8,13,13-tetramethyl-9-[(triethylsilyl)oxy]-7,11-methano-5H-cyclodeca[3,4]benz[1,2-b]oxet-5-one; Paclitaxel - In House Impurity

**Structure:**



**Molecular Formula:**

C<sub>37</sub>H<sub>52</sub>O<sub>11</sub>Si

**Molecular weight:**

700.89

**Source of Product:**

Synthetic

**Solubility:**

Chloroform (Slightly), Ethyl Acetate (Slightly), Methanol (Slightly)

**Lot Number:** 9-MBA-96-2

**Purity:** 98%

**Shipping Condition:** This Product Is Stable To Be Shipped At Room Temperature

**Storage Condition:** -20°C

### 2. Warning

**Warning 1:**

**Warning 2:**

**Warning 3:**

### 3. Analytical Information

Tests:	Specifications:	Results:
Appearance	White to Off-White Solid	White Solid
Water Content	Report Result	0.3% by Karl Fischer
NMR	Conforms to Structure	Conforms
Elemental Analysis	Conforms	%C: 63.39, %H: 7.48, %N: 0.18
HPLC Purity	Report Result	99.83% (200 nm)
MS	Conforms to Structure	Conforms
Specific Rotation	Report Result	-41.8° (c = 0.1, Methanol)

**Additional Information:** N/A

Purity is based on the analytical results of the tests performed. NMR and Elemental Analysis (if available) may have an accuracy of ± 2%. Isotopic purity is based on mass distribution observed. The contents of the specifications are subject to change without advance notice, and the specification values displayed here are the most up to date values.

### 4. Signatures

<b>Reviewed By</b>	<b>Reviewed By</b>	<b>C of A Approved By</b>	<b>Test Date</b>	<b>Retest Date</b>
Evan Burns	Toni Rantanen	Chanell Chu	11/22/2021	11/20/2025
				